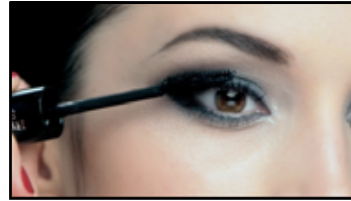
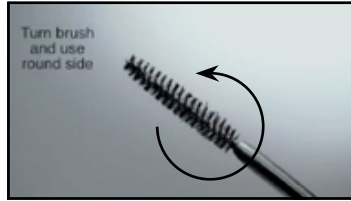


HYPNÔSE STAR: GET THE STAR EYE-LOOK



STEP 1 Start with the flat side of the brush by applying it right at the lashline to get the instant volume. Then, comb through your lashes using a zig-zag motion with the brush to make sure the Hypnôse Star formula is evenly applied.

STEP 2 Turn the brush so you can use the round side and work it through your lashes from the base to the tips.

STEP 3 Remember to keep using a back and forth motion with the brush as you move it through your lashes to achieve perfect separation.

FINISHED LOOK

As you can see Hypnôse Star gives instant volume at the lashline and luscious length through the tips. Lashes look separated and longer with just one application!